

AirTight® Planner

Wireless LAN Planning for Coverage, Performance and Security



Maximizing Your WLAN ROI

AirTight Planner is a predictive WLAN planning tool that can help optimize your WLAN bill of material based on your Wi-Fi coverage, capacity and security requirements, reduce the need for extensive and costly RF site surveys, and simplify installation.

Based on a comprehensive built-in knowledge base of sophisticated RF propagation models, RF characteristics of AirTight APs and sensors as well as third party equipment (e.g., other vendor APs, antennas, Wi-Fi client properties), and path loss values for common building materials, AirTight Planner can accurately estimate the number of APs (or sensors) required and recommend their optimal placement and configurations to meet your planning goals.

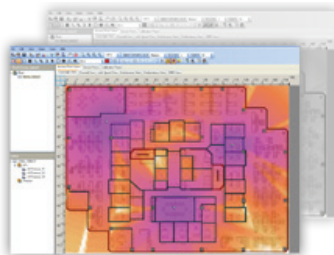
RF Environment Modeling



AirTight Planner supports both indoor and outdoor RF planning. You can import floor maps as AutoCAD files (DWG and DXF) or image files (JPEG, GIF, BMP).

With AutoCAD files, you can select the appropriate layers, relevant for RF planning, from within Planner. If using image files, Planner provides a repository of common building materials and a variety of objects that you can use to simply click and draw different types of walls on the floor map and model the RF environment in no time.

WLAN Planning for Coverage and Capacity



AirTight Planner comes with a built-in repository of AirTight AP models as well as other common WLAN vendor AP models. You can simply drag and drop APs onto a floor plan and visualize the RF propagation based on the modeled path loss.

Fine-grained RF heat maps provide rich visualization of estimated WLAN coverage in terms of signal strength or RSSI (dBm), data rates (Mbps), redundancy or overlapping coverage, channel allocation, inter-AP interference and SNR overlaid on top of the floor plan.

AirTight Planner can also automate the WLAN planning with its unique wizard and auto-AP placement feature. The wizard takes your planning goals, in terms of coverage (e.g., data rates) or capacity (e.g., expected no. of active users, application mix, per user throughput), as input.

Using sophisticated algorithms, it first estimates if your planning goals can be realistically met based on the selected AP model and RF environment. It then calculates the number of APs required to meet the goals, automatically places them on the floor map and allocates an optimal set of channels to minimize adjacent channel and co-channel interference.

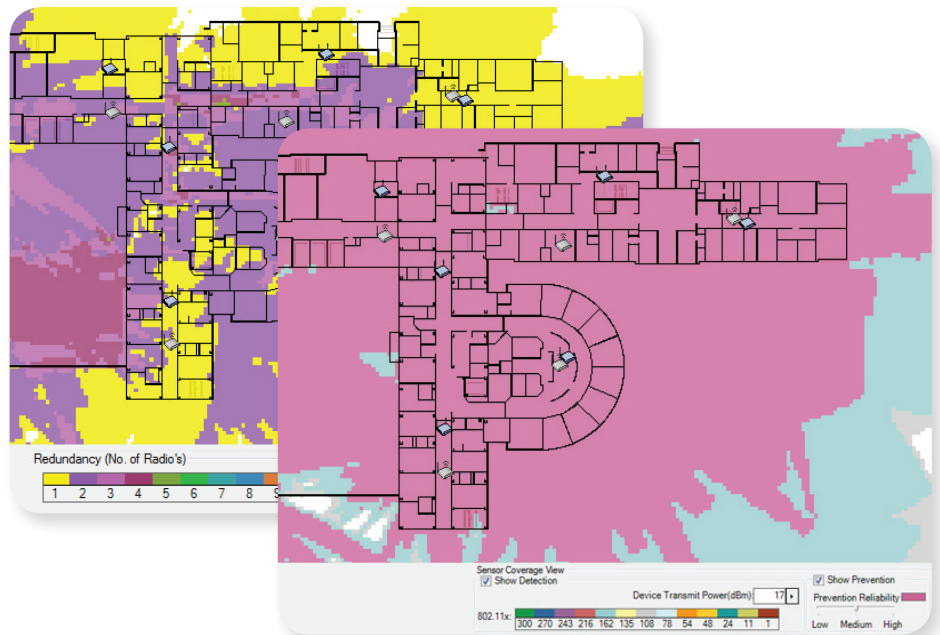
Key Features

- Supports 2.4 GHz and 5 GHz frequency bands and IEEE 802.11a ,b, g, and n protocols
- Comprehensive repositories of AP models, antennas, radiation patterns, and building materials
- Support for creating custom models
- WLAN coverage, capacity and security planning
- Simple drag and drop techniques for quick “what-if” analysis
- Auto AP placement, channel allocation and capacity calculator
- Configurable WLAN planning report

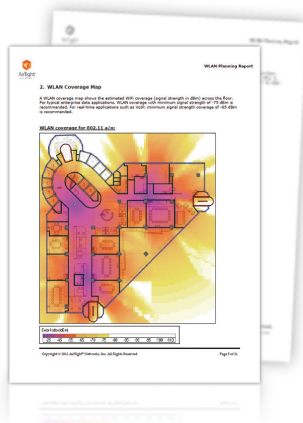
Wireless Security Planning

The AirTight Planner is the only tool that also supports RF planning of wireless security sensors for wireless intrusion detection, prevention and location tracking. All AirTight WIPS sensor models are readily available, including AP/sensor combo modes of operation.

On dragging and dropping the sensors on the floor map, the wireless security coverage can be visualized overlaid on the floor map. Fine-grained RF heat maps include detection and prevention coverage in terms of signal strength or RSSI (dBm) and redundancy or overlapping coverage for location tracking accuracy.



Configurable WLAN and WIPS Planning Report



Custom planning reports (MS Word) can be generated from AirTight Planner by selecting specific RF heat maps that you want to include. The planning report serves as the blueprint for the WLAN installation team, simplifying the deployment.

Integration with AirTight Wi-Fi and AirTight WIPS

The AirTight Planner output file (SPM format) that contains all the information about a planning project can be imported into an AirTight management server used to manage AirTight Wi-Fi and WIPS.

Once imported, the SPM file is decoded and the floor map with placement of APs and sensors becomes readily available in the HTML5 management console. This makes it easy for the network administrator to drag and drop the AP and sensor icons in the console to their respective positions where they are installed in real life.

Once an AirTight Wi-Fi and WIPS system is in place, the live RF heat maps for WLAN and WIPS coverage can be viewed overlaid on the floor map inside the HTML5 management console.



The Global Leader in Secure Wi-Fi Solutions

AirTight Networks, Inc. 339 N. Bernardo Avenue #200, Mountain View, CA 94043
 T +1 (877) 424-7844 T (650) 961-1111 F (650) 961-1169
www.airtightnetworks.com | info@airtightnetworks.com